



**RBT-2000D-60**  
2000 kVA / 1600 kW

# ROTARY UPS

## RBT-2000D-60

### Performances and Characteristics

Voltage	3 x 480 V
Frequency	60 Hz
Nominal phase current	2406 A
Nominal apparent power	2000 kVA
Nominal active power	1600 kW
Nominal cos φ	0.87 leading to 0.8 lagging
Rotabloc Efficiency at nominal load	95.5%
Nominal Autonomy	10s
Maximum autonomy at full load	10.9s
Maximum energy storage	17.4 MJ
Maximum temperature	Up to 50° C (1)
Altitude (without de-rating)	≤ 3280 ft
Humidity	≤ 90%

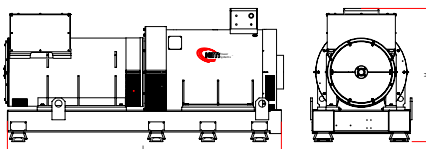
### Standard Features

- Automatic lubrication system
- Touch-screen digital HMI
- Dynamic Autonomy Control (DAC)
- Electrical panels IEC 61439 Form 1
- Automatic by-pass

### Options

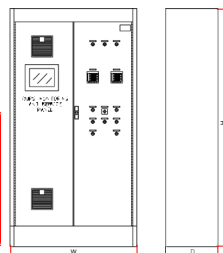
- Plug & Run parallel working
- Supervision software
- Containerized solution
- Bearing monitoring
- Electrical panels IEC 61439 Form 4
- Medium Voltage
- Soundproof enclosure
- High Temperature 50° C

### ROTABLOC®



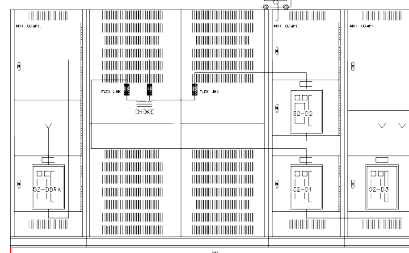
L x W x H (2x) 126.97 x 47.24 x 61.81 in  
Protection IP23

### Control Cabinet



L x W x H  
50 x 22 x 76 in  
Protection IP43

### Power Cabinet



L x W x H 182 x 60 x 94 in  
Protection IP43

### VFD Cabinet



L x W x H  
(2x) 25 x 22 x 76 in  
Protection IP43

(1): Standard 40°C - Up to 50°C with power derating

All data in this document is for information only and is subject to change.