



RBT-1250D-60
1250 kVA / 1000 kW

ROTARY UPS

RBT-1250D-60

Performances and Characteristics

| | |
|-------------------------------------|-----------------------------|
| Voltage | 3 x 480 V |
| Frequency | 60 Hz |
| Nominal phase current | 1504 A |
| Nominal apparent power | 1250 kVA |
| Nominal active power | 1000 kW |
| Nominal cos φ | 0.75 leading to 0.8 lagging |
| Rotabloc Efficiency at nominal load | 94.8% |
| Nominal Autonomy | 10s |
| Maximum autonomy at full load | 16s |
| Maximum energy storage | 16 MJ |
| Maximum temperature | Up to 50° C (1) |
| Altitude (without de-rating) | ≤ 3280 ft |
| Humidity | ≤ 90% |

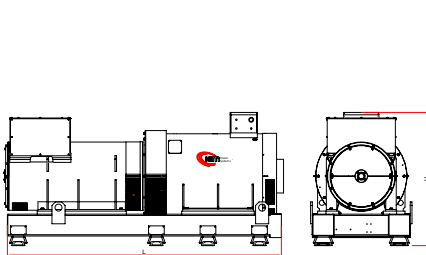
Standard Features

- Automatic lubrication system
- Touch-screen digital HMI
- Dynamic Autonomy Control (DAC)
- Electrical panels IEC 61439 Form 1
- Automatic by-pass

Options

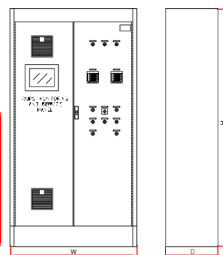
- Plug & Run parallel working
- Supervision software
- Containerized solution
- Bearing monitoring
- Electrical panels IEC 61439 Form 4
- Medium Voltage
- Soundproof enclosure
- High Temperature 50° C

ROTABLOC®



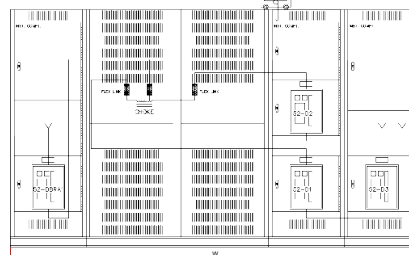
L x W x H (2x) 123.43 x 45.67 x 60 in
Protection IP23

Control Cabinet



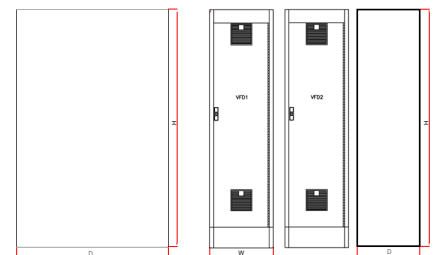
L x W x H
50 x 22 x 76 in
Protection IP43

Power Cabinet



L x W x H 174 x 48 x 94 in
Protection IP43

VFD Cabinet



L x W x H
(2x) 25 x 22 x 76 in
Protection IP43

(1): Standard 40°C - Up to 50°C with power derating

All data in this document is for information only and is subject to change.